

**"If you want to go fast, go alone.
If you want to go far, go together."**

-African Proverb-

La Crème Creative Inc. is a not for profit creative space situated in the heart of Brookvale.
Our mission is to connect artists, entrepreneurs, makers, small businesses and freelancers
in a creative, casual and fun environment that nurtures synergy and collaboration.

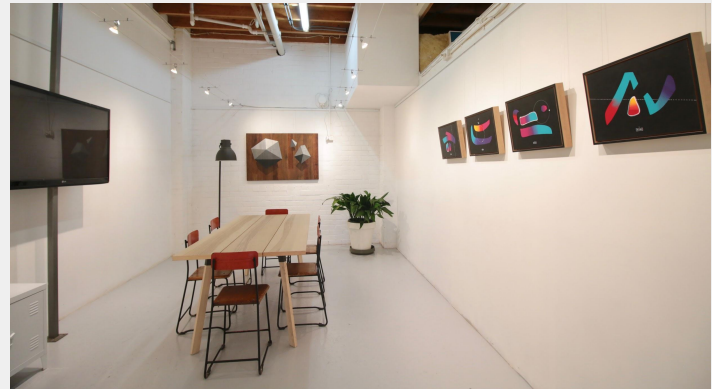
We are excited to present our **Artist Residency Program**.

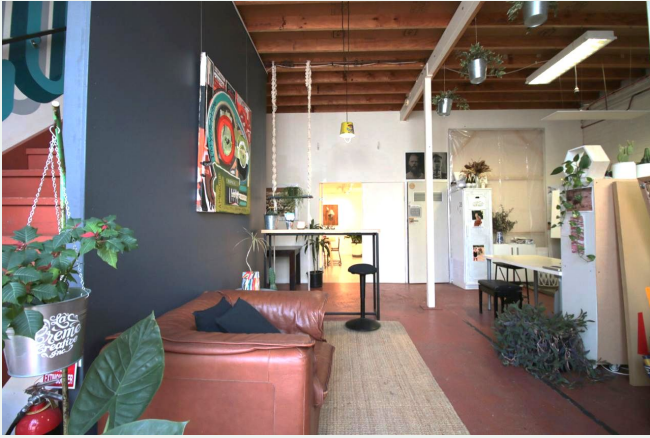
What is the La Crème Residency Program?

The **La Crème Residency Program** offers a free studio residency to artists from the local community needing assistance, support and the opportunity to build their artistic career. The program will run for 3 months, offering the opportunity to 4 artists per year.

The selected artist will be given a studio space for the duration of the residency to produce a body of work and the opportunity to have a solo show in our exhibition space at La Crème in Brookvale. There will also be opportunities to collaborate with the other artists at La Crème, learn new skills and get professional advice.

Due to COVID-19, the Program has suffered some delays and we have worked on the criteria. Thanks for your patience and understanding.





La Crème has been working hard to build a strong creative community, and wants to be able to offer this opportunity to everyone, particularly those who might be financially disadvantaged, needing connection to a creative community, unsure where to start with producing a body of work, or perhaps those who are returning to their practice and want to get back to their creative calling.

If this sounds like you... then please **jump onto our website and apply now!**

<https://www.lacremecreative.org/residency-program>



This Residency Program has been partially funded by the Northern Beaches Councils Community, Arts and Cultural grants scheme. We are very grateful for their support and their collaboration with us for this project.



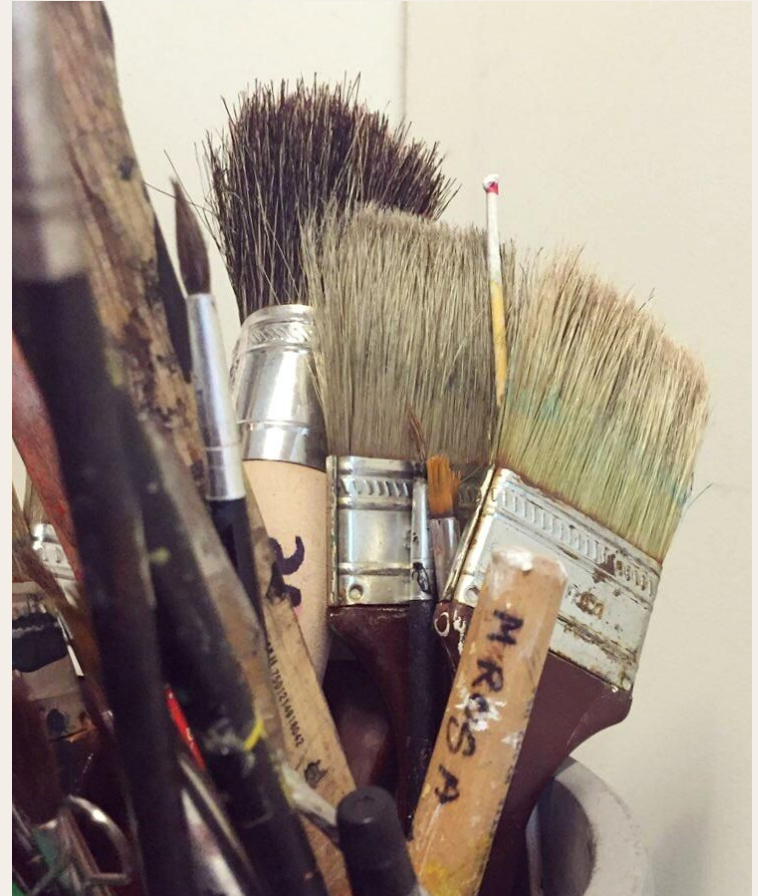
Who can apply?

We are looking particularly for those creative souls who are starting out, or perhaps those who have had a long break and returning to their creative careers. We are looking for school leavers, TAFE/University students or graduates, Aboriginal or Torres Strait Islanders, refugees or anyone who believes they have a passion for art and want to give it a red hot go.

If you are an established artist or have had previous experience in exhibiting your work, you are also eligible to apply for this Residency Program.

International artists who want to work and show in Australia, are welcome to apply. For more information, please get in touch.

There are no prerequisites to applying for this program, however, we do expect to see that you are serious about turning your artist practice into a career and we would like to see some of your current or past work.

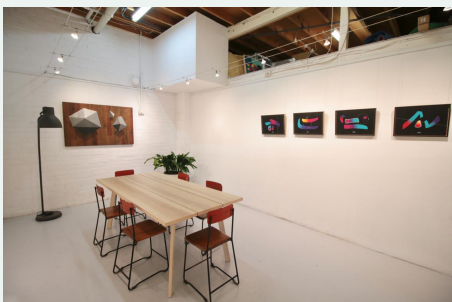


What is required in the application?

Do not worry, our application process is not overly complicated or long. The questions you will be asked are:

1. Name and phone number
2. Please describe your artist practice and a brief artist statement.
3. What makes you eligible and why do you want to take part in the La Crème Residency Program for 2022?
4. What do you hope to get out of the La Crème Residency Program and how do you feel this program will benefit you at the stage you are currently at in your creative career?
5. As part of this Residency Program you will be expected to present the work you have created as a solo exhibition in our exhibition space. Is there a specific project you have in mind that you would like to work on during your residency, or are you planning to use this time to start something new?
6. As part of the Residency Program It could require you to attend a minimum of 15 hours a week. Are you able to commit to the minimum hours of attendance?
7. Are there any further comments to support your application?

Note: Please upload 5-10 images of your current or past work. This may be work that you would like to explore further during your residency but it is not a requirement. You may start a whole new body of work for this Residency.



What is included?

As part of your Residency Program you will get:

- Studio space for 3 months with 24/7 access.
- A solo exhibition in our gallery space.
- Mentorship with professional artists who will guide you through the development and creation of your body of work and will be available to consult on the process of mounting your own solo show".
- Support in the creation of content for the exhibition
- A priceless reward of being part of an awesome creative community.

The Residency schedules for 2019-2021 are as follows:



- 1- 9th Sep 2019 - 6th December 2019 - Artist: India O'Hara Andreoli
- 2- 9th December 2019 - 6th March 2020 - Artist: Oliver Scherer
- 3- 9th March 2020 - 5th June 2020 - Artist: Tim Selwyn
- 4- 29th June - 25th September 2020 - Artist: Katika Schultz
- 5- 28th September - 25th December 2020 - Artist: Olivia Dilks
- 6- 04th January - 2nd April 2021 - Artist: Remi Siciliano
- 7- 05th March - 5th June 2021 - Artist: Isabelle Moura

*Due to COVID19, the Program has suffered some delays and changes. Thank you for your understanding and patience.



How can I apply?

To apply go onto our website (www.lacremecreativeinc.com) and click on 'RESIDENCY PROGRAM' in the items in our menu. Click on the 'APPLY NOW' button and it will take you to the form, which you will need to fill out and then press send on the top right corner of the form. Goodluck!!

Apply details here: lacremecreativeinc@gmail.com **Find out more about us:** <https://www.instagram.com/lacremecreativeinc/>
<https://www.lacremecreative.org/>

Covid-19 Safe



Some rules may vary. We will follow the instructions of the Australian Government.

While distancing may be part of our new normal, collaboration and connection remain more important than ever and having a safe place to do that is essential. We want our members to know that they can make La Crème part of their day and still feel comfortable being with friends and family outside of work.

GENERAL:

- Maintain social distancing
- No large gatherings in communal areas
- If you are feeling unwell, please stay home
- Please use the hand sanitisers available in the communal areas
- Please isolate if you have come into contact with anyone infected
- Get tested if you are sick
- Download COVID safe app
- Sign in each day using the diary
- Please use common sense and help keep the community safe

